

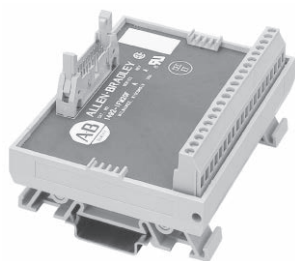
Programmable Controller Wiring Systems

Overview

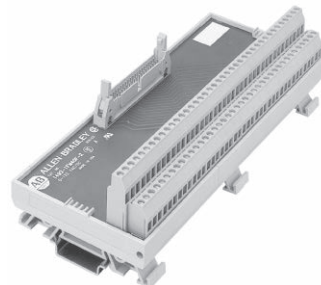
Digital Interface Modules (IFMs)

Feed-Through

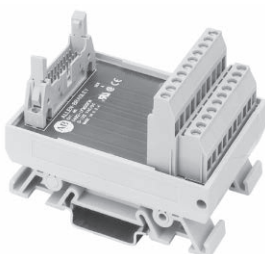
Feed-through IFMs provided the same capability as normal terminal blocks, but in a more condensed package.



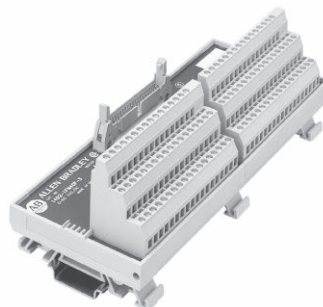
Feed-through Standard
For 20-point: Cat. No. **1492-IFM20F**
For 40-point: Cat. No. **1492-IFM40F**



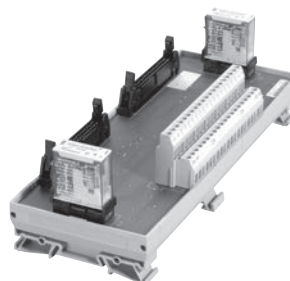
Feed-through Extra Terminal Products
For 20-point: Cat. No. **1492-IFM20F-2**
For 40-point: Cat. No. **1492-IFM40F-2**



Feed-Through Narrow
Cat. No. **1492-IFM20FN**



Feed-through Sensor Terminal Products
For 20-point: Cat. No. **1492-IFM20F-3**
For 40-point: Cat. No. **1492-IFM40F-3**



Safety Integrity Level (SIL 2)
Cat. No. **1492-TIFM40F-F24-2**



Programmable Controller Wiring Systems

Bulletin 1756 ControlLogix Modules

Digital IFMs and Cables for Bulletin 1756 ControlLogix 16-point Isolated and 32-point I/O Modules

Voltage [V]	Term. per I/O	Description	Fixed Terminal Block Cat. No.	Removable Terminal Block Cat. No.	RTB Plugs \clubsuit Cat. No.	Bulletin 1756 ControlLogix I/O Module																	
						1756-IA16I	1756-IB16D	1756-IB16I	1756-IA32	1756-IB32	1756-IV32	1756-IH16I	1756-IM16I	1756-OA16I	1756-OB8EI	1756-OB16D	1756-OB16I	1756-OB16IS	1756-OB32	1756-OV32E	1756-OH8I	1756-OW16I	1756-OX8I
						Digital Cable Cat. No. Suffix \blacktriangleleft																	
Feed-through																							
24... 120	1	Standard	1492-IFM40F	1492-RIFM40F	1492-RTB20 \clubsuit	Y	Y	Y	Z	Z	Z	Y		Y	Y	Y	Y	Z	Z	Y	Y	Y	
	2	Extra Terminals	1492-IFM40F-2	1492-RIFM40F-2	1492-RTB20 \clubsuit		Y		Z	Z	Z				Y			Z	Z				
	3	Sensor	1492-IFM40F-3	—	—					Z	Z												
LED Indicating																							
24	1	Standard	1492-IFM40D24	1492-RIFM40D24	1492-RTB20 \clubsuit					Z	Z							Z	Z				
	2	Extr.Term.	1492-IFM40D24-2	—	—													Z	Z				
	2	Extr.Term. (input)	1492-IFM40D24A-2	1492-RIFM40D24A-2	1492-RTB20 \clubsuit					Z	Z												
	3	Sensor	1492-IFM40D24-3	—	—					Z	Z												
	4	Isolated	1492-IFM40DS24-4	—	—										Y	Y ¹³	Y	Y				Y	Y
120	2	Extr.Term. (input)	1492-IFM40D120A-2	—	—					Z													
	4	Isolated	1492-IFM40DS120-4	—	—									Y							Y	Y	
	4	Isolated (input)	1492-IFM40DS120A-4	—	—	Y																	
240	4	Isolated (input)	1492-IFM40DS240A-4	—	—								Y										
Fusible																							
24	2	Blown fuse LED	1492-IFM40F-F24-2	1492-RIFM40F-F24-2	1492-RTB20 \clubsuit													Z	Z				
	2	Blown fuse LED	1492-IFM40F-F24D-2	—	—										Y								
	4	Blown fuse LED	1492-IFM40F-F24AD-4	—	—		Y																
24... 120	2	Extra Terminals	1492-IFM40F-F-2	—	—													Z	Z				
Fusible - Isolated																							
24	2	Extr. Term.	1492-IFM40F-FS24-2	—	—									Y	\clubsuit	Y ¹²	Y ¹²				Y	Y	
	4	Blown fuse LED	1492-IFM40F-FS24-4	—	—									Y	\clubsuit	Y ¹²	Y ¹²				Y	Y	
	4	Blown fuse LED (input)	1492-IFM40F-FS24A-4	—	—	\ddagger	Y																
24... 120	2	Extr. Term.	1492-IFM40F-FS-2	—	—									Y	Y	Y	Y ¹²	Y ¹²			Y	Y	Y
	4	Extr. Term.	1492-IFM40F-FS-4	—	—									Y	Y	Y	Y ¹²	Y ¹²			Y	Y	Y
	4	Blown fuse LED (input)	1492-IFM40F-FSA-4	—	—	Y	Y	Y			Y												
120	2	Blown fuse LED	1492-IFM40F-FS120-2	1492-RIFM40F-FS120-2	1492-RTB20 \clubsuit									Y						Y	Y	Y	
	4	Blown fuse LED	1492-IFM40F-FS120-4	1492-RIFM40F-FS120-4	1492-RTB17 \clubsuit									Y							Y	Y	
	4	Blown fuse LED (input)	1492-IFM40F-FS120A-4	1492-RIFM40F-FS120A-4	1492-RTB17 \clubsuit	Y					Y												
240	4	Blown fuse LED	1492-IFM40F-FS240-4	—	—									Y							Y	Y	
	4	Blown fuse LED	1492-IFM40F-FS240A-4	—	—									Y									
Safety Integrity Level (SIL) ¹⁴																							
24	2	Blown fuse LED (input)	1492-TIFM40F-F24A-2	—	—													Z	Z				
	2	Blown fuse LED	1492-TIFM40F-24-2	—	—									Y									

See footnotes on the following page.



Programmable Controller Wiring Systems

Bulletin 1756 ControlLogix Modules

Relay XIMs and Cables for Bulletin 1756 ControlLogix 16-point Isolated and 32-point I/O Modules

Voltage [V]	Term. per I/O	Description	Fixed Terminal Block Cat. No.	Removable Terminal Block Cat. No.	RTB Plugs❖ Cat. No.	Bulletin 1756 ControlLogix I/O Module																	
						1756-IA16I	1756-IB16D	1756-IB16I	1756-IA32	1756-IB32	1756-IV32	1756-IH16I	1756-IM16I	1756-OA16I	1756-OB8EI	1756-OB16D	1756-OB16I	1756-OB16IS	1756-OB32	1756-OV32E	1756-OH8I	1756-OW16I	1756-OX8I
						Digital Cable Cat. No. Suffix➤																	
Relay Master (LED Indicating)§♣																							
24	1	8 relays	1492-XIM4024-8R	—	—															Z			
	1	16 relays	1492-XIM4024-16R	1492-RXIM4024-16R	1492-RTB14❖															Z			
	1	16 relays with fusing	1492-XIM4024-16RF	—	—															Z			
High Density Relay Master (LED Indicating)§♣																							
24	1	32 relays - mechanical	1492-XIMTR4024-32R	♣ 1492-RXIMTR4024-32R	1492-RTB20❖															Z	Z		
	1	32 relays - solid-state	1492-XIMTS4024-32R	♣ 1492-RXIMTS4024-32R																	Z		
Relay Expander (LED Indicating)§♣																							
24	1	Expander with 8 relays	1492-XIM24-8R	1492-RXIM24-8R	1492-RTB12❖															➤			
Fusible Expander																							
24	2	8 Ch Blown fuse LED	1492-XIMF-F24-2	—	—																➤		
	1	16 Ch Blown Fuse LED	1492-XIM24-16RF	—	—																⚡		
Feed-Through Expander																							
120	2	8 Ch	1492-XIMF-2	—	—																➤		

➤ To order a Pre-wired Cable, add the appropriate **letter** from the selection table above to the end of the **Cat. No.** below.

- 0.5M Cable = 1492-CABLE005_
- 1.0M Cable = 1492-CABLE010_
- 2.5M Cable = 1492-CABLE025_
- 5.0M Cable = 1492-CABLE050_

Custom Length Cable = 1492-CABLEXXX_. See Catalog Number Explanation on page 12-137 for available Custom Length Codes to replace XXX in Cat. No.

❖ Order plugs separately (two plugs per catalog number). Plugs are available in screw style and push in style terminal types. To order, replace the ❖ in the catalog number with the code for the desired terminal style. The code for screw style is **N** and the code for push in style is **P**.

♣ Requires four RTB Plugs.

♣ The LED indicates the PLC output status.

➤ Can have up to 2 or 3 expander modules depending upon master used (total 32 outputs or less). An extender cable is provided.

⚡ One 1492-XIM24-16RF is to be used with one 1492-XIM4024-16R or 1492-XIM4024-16RF master (32 pt. only).

§ The voltage rating is relay control/coil voltage. For relay contact ratings, refer to page 9-42.

⚡ The 1492-IFM40F-FS24-2 and 1492-IFM40F-FS24-4 module and 1492-CABLE*Y cable can be used with the 1756-OB16D module. However, due to the 1492-IFM40F-FS24-2 and 1492-IFM40F-Fs24-4 module's blown fuse leakage current ratings, the "no load" diagnostic function of the 1756-OB16D will not indicate a blown or removed fuse as a no load condition. If you require this diagnostic to function for a blown or removed fuse, you must use a 1492-IFM40F-F24D-2.

⚡ The 1492-IFM40F-FS24A-4 module and 1492-CABLE*Y cable can be used with the 1756-IB16D module. However, due to the 1492-IFM40F-FS24A-4 module's blown fuse leakage current rating, the "wire off" diagnostic function of the 1756-IB16D will not indicate a blown or removed fuse as a wire off condition. If you require this diagnostic to function for a blown or removed fuse, you must use a 1492-IFM40F-F24AD-4.

¹² Do not use this module in output sinking mode with fused IFM modules as the IFM module fuses will not properly protect the circuit.

¹³ IFMs LED provides PLC output ON/OFF indication. Due to the magnitude of current through the LED, the 1756-OB16D PLC module "No Load" diagnostic function will not work. If this function is required, use the Cat. No. 1492-IFM40F-2.

¹⁴ This 1492 module is for use in SIL2 safety systems only. It does not satisfy the requirements for general I/O fault tolerance. To use this module in a SIL2 application, specially developed application software for the ControlLogix processor must be used. To obtain the latest revision of this application software contact Technical Support at 1-440-646-3434.

Programmable Controller Wiring Systems

Bulletin 1769 CompactLogix Modules

Digital IFMs and Cables for Bulletin 1769 CompactLogix 32-point I/O Expansion Modules

Voltage [V]	Term. per I/O	Description	Fixed Terminal Block Cat. No.	Removable Terminal Block Cat. No.	RTB Plugs ❖ Cat. No.	Bulletin 1769 CompactLogix I/O Module				
						1769-IC32	1769-IC32T	1769-OB32	1769-OB32T	1769-OV32T
						Digital Cable Cat. No. Suffix †				
Feed-Through										
24...120	1	Standard	1492-IFM40F	1492-RIFM40F	1492-RTB20❖	J69	H	K69	H	H
	2	Extr. Term.	1492-IFM40F-2	1492-RIFM40F-2	1492-RTB20❖	J69	H	K69	H	H
	3	Sensor	1492-IFM40F-3	—	—	J69	H			
LED Indicating										
24	1	Standard	1492-IFM40D24	1492-RIFM40D24	1492-RTB20❖	J69	H	K69	H	H
	2	Extr. Term. (output)	1492-IFM40D24-2	—	—			K69	H	H
		Extr. Term. (input)	1492-IFM40D24A-2	1492-RIFM40D24A-2	1492-RTB20❖	J69	H			
	3	Sensor	1492-IFM40D24-3	—	—	J69	H			
24	2	Extr. Term.	1492-IFM40F-F24-2	1492-RIFM40F-F24-2	1492-RTB20❖			K69	H	H
24...120	2	Extr. Term.	1492-IFM40F-F-2	—	—			K69	H	H

See footnotes on the following page.



Programmable Controller Wiring Systems

Bulletin 1762 and 1764 MicroLogix Modules

Digital IFMs and Cables for Bulletin 1762 MicroLogix 1200 I/O

Voltage [V]	Term. per I/O	Description	Bulletin 1762 MicroLogix1200 I/O Module								
			Fixed Terminal Block	Removable Terminal Block	RTB Plugs ❖	1762-L40AWA Inputs	1762-L40BWA Inputs	1762-L40BWB Inputs	1762-L40AWA Outputs	1762-L40BWA Outputs	1762-L40BWB Outputs
			Cat. No.	Cat. No.	Cat. No.	Digital Cable Cat. No. Suffix +					
Feed-Through*											
120	1	Standard	1492-IFM40F	1492-RIFM40F	1492-RTB20❖	A62	A62	A62	B62	B62	B62
	2	Extr. Term.	1492-IFM40F-2	1492-RIFM40F-2		A62	A62	A62	B62	B62	B62

❖ To order a Pre-wired Cable, add the **Suffix No.** from the table above to the end of the **Cat. No.** below.

- 0.5M Cable = 1492-CAB005_
- 1.0M Cable = 1492-CAB010_
- 2.5M Cable = 1492-CAB025_
- 5.0M Cable = 1492-CAB050_

Custom Length Cable = 1492-CABXXX_. See Catalog Number Explanation on page 12-136 for available Custom Length Codes to replace XXX in Cat. No.

❖ Order plugs separately (two plugs per catalog number). Plugs are available in screw style and push in style terminal types. To order, replace the ❖ in the catalog number with the code for the desired terminal style. The code for screw style is **N** and the code for push in style is **P**.

* When using this IFM module with the base I/O of the 1762 controller, the current rating of the outputs must be considered. Refer to Publication 1492-TD008 for details.

Digital IFMs and Cables for Bulletin 1764 MicroLogix 1500 I/O

Voltage [V]	Term. per I/O	Description	Bulletin 1764 MicroLogix 1500 I/O Module								
			Fixed Terminal Block	Removable Terminal Block	RTB Plugs ❖	1764-AWA Inputs	1764-BWA Inputs	1764-BXB Inputs	1764-AWA Outputs	1764-BWA Outputs	1764-BXB Outputs
			Cat. No.	Cat. No.	Cat. No.	Digital Cable Cat. No. Suffix +					
Feed-Through*											
120	2	Narrow	1492-IFM20FN	1492-RIFM20FN	1492-RTB10❖	A64	A64	B64	C64	C64	F64
240	1	Standard	1492-IFM20F	1492-RIFM20F	1492-RTB20❖	A64	A64	B64	C64	C64	F64
	2	Extr. Term.	1492-IFM20F-2	1492-RIFM20F-2	1492-RTB20❖	A64	A64	B64	C64	C64	F64

❖ To order a Pre-wired Cable, add the **Suffix No.** from the table above to the end of the **Cat. No.** below.

- 0.5M Cable = 1492-CAB005_
- 1.0M Cable = 1492-CAB010_
- 2.5M Cable = 1492-CAB025_
- 5.0M Cable = 1492-CAB050_

Custom Length Cable = 1492-CABXXX_. See Catalog Number Explanation on page 12-136 for available Custom Length Codes to replace XXX in Cat. No.

❖ Order plugs separately (two plugs per catalog number). Plugs are available in screw style and push in style terminal types. To order, replace the ❖ in the catalog number with the code for the desired terminal style. The code for screw style is **N** and the code for push in style is **P**.

* When using this IFM module with the base I/O of the 1764 controller, the current rating of the outputs must be considered. Refer to Publication 1492-TD008 for details.

Programmable Controller Wiring Systems

Bulletin 1794 Flex I/O Modules

Digital IFMs and Cables for Bulletin 1794 Flex I/O 8-Point and 16-Point Modules

Voltage [V]	Term. per I/O	Description	Fixed Terminal Block Cat. No.	Removable Terminal Block Cat. No.	RTB Plugs ❖ Cat. No.	Bulletin 1794 Flex Digital I/O Module ❧																
						1794-IB16	1794-IB8	1794-IB10XOB6	1794-IV16	1794-OB16	1794-OB16P	1794-OB8	1794-OB8EP	1794-OV16	1794-OV16P	1794-OW8						
						Digital Cable Cat. No. Suffix †																
Feed-Through																						
24... 120	1	Standard	1492-IFM20F	1492-RIFM20F	1492-RTB20❖	A94	A94	A94	A94	A94	A94	A94	A94	A94	A94	A94						
	1	Narrow	1492-IFM20FN	1492-RIFM20FN	1492-RTB10❖	A94	A94	A94	A94	A94	A94	A94	A94	A94	A94	A94						
	2	Extr. Term.	1492-IFM20F-2	1492-RIFM20F-2	1492-RTB20❖	A94	A94	A94	A94	A94	A94	A94	A94	A94	A94	A94						
	3	Sensor	1492-IFM20F-3	—	—	A94	A94		A94													
LED Indicating																						
24	1	Standard	1492-IFM20D24	—	—					A94	A94	A94	A94	A94	A94							
	1	Narrow	1492-IFM20D24N	—	—	A94	A94			A94	A94	A94	A94									
	2	Extr. Term. (output)	1492-IFM20D24-2	—	—					A94	A94	A94	A94	A94	A94							
	2	Extr. Term. (input)	1492-IFM20D24A-2	—	—	A94	A94		A94													
120	4	Isolated w/ Extr. Term.	1492-IFM20DS24-4	—	—											A94						
Fusible																						
24	2	Blown Fuse LED	1492-IFM20F-F24-2	1492-RIFM20F-F24-2	1492-RTB20❖					A94	A94	A94	A94	A94	A94							
	2	Blown Fuse LED (input)	1492-IFM20F-F24A-2	1492-RIFM20F-F24A-2	1492-RTB20❖	A94	A94															
24... 120	2	Blown Fuse LED	1492-IFM20F-F-2	1492-RIFM20F-F-2	1492-RTB20❖					A94	A94	A94	A94	A94	A94							
Fusible, Isolated																						
24	2	Blown Fuse LED	1492-IFM20F-FS24-2	—	—											A94						
24... 120	2	Extr. Term. (output)	1492-IFM20F-FS-2	—	—											A94						
120	2	Blown Fuse LED	1492-IFM20F-FS120-2	—	—											A94						

Digital IFMs and Cables for Bulletin 1794 Flex I/O 16-Point and 32-Point Modules

Voltage [V]	Term. per I/O	Description	Fixed Terminal Block Cat. No.	Removable Terminal Block Cat. No.	RTB Plugs ❖ Cat. No.	Bulletin 1794 Flex Digital I/O Module ➤			
						1794-IB16D	1794-IB16XOB16P	1794-IB32	1794-OB32P
						Digital Cable Cat. No. Suffix †			
Feed-Through									
24...120	1	Standard	1492-IFM40F	1492-RIFM40F	1492-RTB20❖	B94	B94	B94	B94
	2	Extr. Term.	1492-IFM40F-2	1492-RIFM40F-2	1492-RTB20❖	B94	B94	B94	B94
LED Indicating									
24	1	Standard	1492-IFM40D24	1492-RIFM40D24	1492-RTB20❖			B94	B94
	2	Extr. Term. (output)	1492-IFM40D24-2	—	—				B94
	2	Extr. Term. (input)	1492-IFM40D24A-2	1492-RIFM40D24A-2	1492-RTB20❖			B94	
Fusible									
24	2	Extr. Term. Blown Fuse LED	1492-IFM40F-F24-2	1492-RIFM40F-F24-2	1492-RTB20❖				B94
24...120	2	Extr. Term. (output)	1492-IFM40F-F-2	—	—				B94

† To order a Pre-wired Cable, add the **Suffix No.** from the table above to the end of the **Cat. No.** below.

- 0.5M Cable = 1492-CAB005_
- 1.0M Cable = 1492-CAB010_
- 2.5M Cable = 1492-CAB025_
- 5.0M Cable = 1492-CAB050_

Custom Length Cable = 1492-CABXXX_. See Catalog Number Explanation on page 12-136 for available Custom Length Codes to replace XXX in Cat. No.

❖ Order plugs separately (two plugs per catalog number). Plugs are available in screw style and push in style terminal types. To order, replace the ❖ in the catalog number with the code for the desired terminal style. The code for screw style is **N** and the code for push in style is **P**.

❧ Uses D-Shell Base 1794-TB37DS

➤ Uses D-Shell Base 1794-TB62DS



Digital IFM Specifications

Digital IFM Cat. No.	Voltage Range	Dimensions (W x H x D) [in.]*	Indicator Circuit Current (Nominal) [mA]	Label Card Cat. No.®
1492-IFM20F, -RIFM20F	0...264V AC/DC	4.33 x 3.27 x 2.78†	—	46006-190-01, 46006-233-01
1492-IFM20FN, -RIFM20FN	0...132V AC/DC	2.36 x 3.27 x 2.78†	—	46006-197-01, -237-01, -220-01
1492-IFM20F-2, -RIFM20F-2	0...264V AC/DC	4.33 x 3.27 x 2.78†	—	46006-192-01, -235-01, -221-01
1492-IFM20F-3	0...132V AC/DC	4.33 x 3.27 x 2.78	—	46006-210-01
1492-IFM20D24	10...30V AC/DC	4.33 x 3.27 x 2.78	2	46006-190-01, 46006-233-01
1492-IFM20D24N	10...30V AC/DC	2.36 x 3.27 x 2.78	2	46006-197-01, -237-01, -220-01
1492-IFM20D24-2	10...30V AC/DC	4.33 x 3.27 x 2.78	2	46006-192-01, -235-01, -221-01
1492-IFM20D24A-2	10...30V AC/DC	4.33 x 3.27 x 2.78	2	46006-211-01
1492-IFM20DS24-4	10...60V AC/DC	4.33 x 3.27 x 2.78	1.6	46006-209-01
1492-IFM20D24-3	10...30V AC/DC	4.33 x 3.27 x 2.78	2	46006-193-01, 46006-236-01
1492-IFM20D120	85...132V AC/DC	4.33 x 3.27 x 2.78	2.5	46006-190-01, 46006-233-01
1492-IFM20D120N	85...132V AC	2.36 x 3.27 x 2.78	2.5	46006-197-01, -237-01, -220-01
1492-IFM20D120-2	85...132V AC	4.33 x 3.27 x 2.78	2.5	46006-192-01, -235-01
1492-IFM20D120A-2	85...132V AC	4.33 x 3.27 x 2.78	2.5	46006-211-01
1492-IFM20DS120-4	85...132V AC	4.33 x 3.27 x 2.78	2.6	46006-209-01
1492-IFM20D240-2	204...264V AC	4.33 x 3.27 x 2.78	2.5	46006-192-01, -235-01
1492-IFM20D240A-2	204...264V AC	4.33 x 3.27 x 2.78	2.5	46006-211-01
1492-IFM20F-F-2, -RIFM20F-F-2	0...132V AC/DC	4.33 x 3.27 x 2.78†	—	46006-192-01, -235-01, -221-01
1492-IFM20F-F24-2, -RIFM20F-F24-2	10...30V AC/DC	4.33 x 3.27 x 2.78†	2	46006-192-01, -235-01, -221-01
1492-IFM20F-F24A-2, -RIFM20F-F24A-2	10...30V AC/DC	4.33 x 3.27 x 2.78†	2.4	46006-212-01, -189-01
1492-IFM20F-F120-2, -RIFM20F-F120-2	85...132V AC	4.33 x 3.27 x 2.78†	2.5	46006-192-01, -235-01, -221-01
1492-IFM20F-F120A-2, -RIFM20F-F120A-2	85...132V AC/DC	4.33 x 3.27 x 2.78†	1.2	46006-212-01, -189-01
1492-IFM20F-F240-2	204...264V AC	4.72 x 3.27 x 2.78	1.2	46006-192-01, -235-01
1492-IFM20F-FS-2	0...132V AC/DC	2.36 x 3.27 x 2.78	—	46006-204-01
1492-IFM20F-FS24-2	10...30V AC/DC	2.36 x 3.27 x 2.78	2	46006-204-01
1492-IFM20F-FS24A-4	10...30V AC/DC	3.15 x 3.27 x 2.78	2.4	46006-215-01
1492-IFM20F-FS120-2	85...132V AC/DC	2.36 x 3.27 x 2.78	2.5	46006-204-01
1492-IFM20F-FS120-4	85...132V AC/DC	4.33 x 3.27 x 2.78	1.2	46006-214-01
1492-IFM20F-FS120A-4	85...132V AC/DC	3.15 x 3.27 x 2.78	2.2	46006-215-01
1492-IFM20F-FS240-4	204...264V AC	4.33 x 3.27 x 2.78	1.2	46006-214-01
1492-IFM40F, -RIFM40F	0...132V AC/DC	4.33 x 3.27 x 2.78†	—	46006-191-01, -234-01, -252-01
1492-IFM40F-2	0...132V AC/DC	8.27 x 3.27 x 2.78	—	46006-224-01, -225-01, -239-01, -240-01, -253-01
1492-RIFM40F-2	0...132V AC/DC	9.05 x 3.27 x 2.78	—	46006-224-01, -225-01, -239-01, -240-01, -253-01
1492-IFM40F-3	0...60V AC/DC	8.27 x 3.27 x 2.78	—	46006-193-01, 46006-236-01
1492-IFM40D24, -RIFM40D24	10...30V AC/DC	4.33 x 3.27 x 2.78†	2	46006-191-01, -234-01, -252-01
1492-IFM40D24-2	10...30V AC/DC	8.27 x 3.27 x 2.78	2	46006-194-01, -195-01, -253-01
1492-IFM40D24A-2	10...30V AC/DC	8.27 x 3.27 x 2.78	2	46006-224-01, -225-01, -239-01, -240-01, -253-01
1492-RIFM40D24A-2	10...30V AC/DC	9.05 x 3.27 x 2.78	2	46006-224-01, -225-01, -239-01, -240-01, -253-01
1492-IFM40DS24-4	10...60V AC/DC	6.69 x 3.27 x 2.78	4.1	46006-208-01
1492-IFM40DS24A-4	10...30V AC/DC	6.69 x 3.27 x 2.78	4.1	46006-208-01
1492-IFM40D24-3	10...30V AC/DC	8.27 x 3.27 x 2.78	2	46006-193-01, 46006-236-01
1492-IFM40D120-2	85...132V AC	8.27 x 3.27 x 2.78	2.5	46006-194-01, -195-01, -253-01
1492-IFM40D120A-2	85...132V AC	8.27 x 3.27 x 2.78	2.5	46006-194-01, -195-01, 253-01
1492-IFM40DS120-4	85...132V AC	6.69 x 3.27 x 2.78	2.6	46006-208-01
1492-IFM40DS120A-4	85...132V AC	6.69 x 3.27 x 2.78	2.6	46006-208-01
1492-IFM40DS240A-4	204...264V AC	6.69 x 3.27 x 2.78	2.6	46006-208-01
1492-IFM40F-F-2	0...132V AC/DC	8.27 x 3.27 x 2.78	—	46006-194-01, -195-01, -253-01
1492-IFM40F-F24-2	10...30V AC/DC	8.27 x 3.27 x 2.78	2	46006-224-01, -225-01, -239-01, -240-01, 253-01
1492-RIFM40F-F24-2	10...30V AC/DC	8.66 x 3.27 x 2.78	2	46006-224-01, -225-01, -239-01, -240-01, 253-01
1492-IFM40F-F24D-2	10...30V AC/DC	4.72 x 3.27 x 2.78	<0.05	46006-201-01
1492-IFM40F-F24AD-4	10...30V AC/DC	7.09 x 3.27 x 2.78	<0.05	46006-206-01
1492-IFM40F-F120-2	85...132V AC	8.27 x 3.27 x 2.78	2.5	46006-194-001, -195-01, -253-01
1492-IFM40F-FS-2	0...132V AC/DC	4.72 x 3.27 x 2.78	—	46006-201-01
1492-IFM40F-FS-4	0...264V AC/DC	7.09 x 3.27 x 2.78	—	46006-207-01
1492-IFM40F-FS24-2	10...30V AC/DC	4.72 x 3.27 x 2.78	2	46006-201-01
1492-IFM40F-FS24-4	10...30V AC/DC	7.09 x 3.27 x 2.78	2.4	46006-207-01
1492-IFM40F-FS120-2, -RIFM40F-FS120-2	85...132V AC/DC	4.72 x 3.27 x 2.78†	2.5	46006-201-01
1492-IFM40F-FS120-4	85...132V AC/DC	7.09 x 3.27 x 2.78	1.4	46006-206-01
1492-RIFM40F-FS120-4	85...132V AC/DC	7.87 x 3.27 x 2.78	1.4	46006-226-01
1492-IFM40F-FS240-4	204...264V AC/DC	7.09 x 3.27 x 2.78	2.4	46006-207-01
1492-IFM40F-FS24A-4	10...30V AC/DC	7.09 x 3.27 x 2.78	3.1	46006-226-01
1492-IFM40F-FS120A-4	85...132V AC/DC	7.09 x 3.27 x 2.78	1.4	46006-226-01
1492-RIFM40F-FS120A-4	85...132V AC/DC	7.87 x 3.27 x 2.78	1.4	46006-226-01
1492-IFM40F-FSA-4	85...132V AC/DC	7.09 x 3.27 x 2.78	—	46006-226-01
1492-IFM40F-FS240A-4	85...264V AC/DC	7.09 x 3.27 x 2.78	1.4	46006-226-01
1492-TIFM40F-F24-2	24V DC	8.66 x 3.27 x 2.74	—	46006-230-01
1492-TIFM40F-F24A-2	24V DC	9.5 x 3.27 x 2.74	3	46006-230-01

* To convert to millimeters, multiply inches by 25.4

® Ships with each module. For spare part, precede the part number with the letter "W."

† Add 0.39 in. to the width dimension for Bulletin 1492-Rxxx modules.

